



## Headteacher's Recommendation

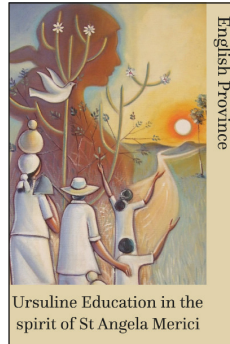
### Ursuline Education in the spirit of St Angela Merici.

English Province

[www.ursulinehigh.merton.sch.uk/about-us/values-and-ethos/](http://www.ursulinehigh.merton.sch.uk/about-us/values-and-ethos/)

Dear Parents,

Last year we published a booklet explaining the global mission of Ursuline Education. Enjoy reading the English Province edition if you haven't already!



## Parents' Events

Parents / carers are always warmly welcomed to these events. This newsletter also outlines RE and PSHEC lesson topics for this half term. Events, Workshops, Courses and Forums are opportunities for parents/carers to meet and explore key issues in education.

### Tues 23rd April

**INSET DAY** (Sixth Form lessons as normal at WC  
St George's Day

### Weds 24th April

**SCHOOL RETURNS**  
Year 6 New Intake Evening  
for Parents (A - L); Hall (7.00-8.00pm)

### Thurs 25th April

Year 6 New Intake Evening for  
Parents (M - Z); Hall (7.00-8.00pm)

### Fri 26th April

Feast of our Lady of Good Counsel  
The Foundation Day of the School

### Thurs 1st May

Student Leader Celebration; USFC  
(7.00-8.00pm)

### Thurs 2nd May

Yr8 Parents' Evening; Hall & Gym (4.00-6.30pm)

### Tues 7th May

Year 7 'Help to Prepare Your Daughter for  
Exams' Evening (7.00pm)

### Thurs 9th May

One Year Sixth Form Leavers Service;  
Wimbledon College (11.00am-12.30pm)

### Fri 10th May

Year 11 Thanksgiving Day; USFC  
(8.45am-12.30pm)  
Year 13 Leavers' Celebration Mass;  
Sacred Heart Church & USFC (6.30-9.30pm)

### Tues 14th May

Year 12 Parents' Higher Education Evening

### Weds 15th May

Dallas Trip Parents' Information Evening;  
USFC (6.00-6.30pm)

### Weds 22nd May

GCSE Music Concert; Hall (7.30-8.30pm)

### Fri 24th May

**TERM ENDS**

### Mon 27th May- Fri 31st May

**HALF TERM**

### Mon 3rd June

**SCHOOL RETURNS**

## LESSON TOPICS: SUMMER A TERM

### RE Programme

**Year 7** will continue with their study of Hinduism. Key questions: What does it mean to describe London as a 'multi-faith community'? What do Hindus believe about God – are they monotheistic or polytheistic? How do they worship? What do Hindus believe happens to us when we die? What are reincarnation and karma? What happens during Hindu festivals and rites of passage? How do Hindu beliefs and practices affect the way Hindus live their lives? This will be followed by revision for End of Year examination.

**Year 8** students will study Good versus Evil. The key questions for this unit are: Are certain actions good because God commands them or does God command them because they are good? How did evil enter the world? Are humans to blame or God? What is a Conscience? Can humans be trusted to always follow their Conscience? Does the good in the world outweigh the evil? This will be followed by revision for End of Year examination.

**Year 9** will consolidate their learnings on the following topics: Creation, Incarnation and Trinity in preparation for End of Year examination. This will be followed by GCSE course on 'Redemption' in which pupils will study how the church architecture reflect Catholic beliefs; the main parts of a Catholic church; Contrasting features and artefacts used by Catholics; The role of Jesus in restoration through sacrifice; The significance of Jesus' death, burial, resurrection and ascension; Salvation; Redemption in the Bible; Ss. Irenaeus' and Augustine's thoughts on salvation; the importance of conscience for Christians; Redemption and the Mass; Different Christian understandings of the Eucharist; Prayers in Mass and adoration.

**Year 10** will explore GCSE course on 'Eschatology' which includes: The Paschal candle; Michelangelo's painting, The Last Judgement'; Memorials of the dead; Eschatology and life after death; The four last things; Purgatory and Judgment; The Parable of the Rich Man and Lazarus; Cosmic reconciliation; The Church's teachings on the end of time; The last rites; The funeral rite; The care of the dying and euthanasia.

**Year 11** will continue their revision lessons for GCSE examinations scheduled for 13th and 20th May 2019.

### PSHEC Programme

**Year 7** Will focus on 'Rights and Responsibilities'. Including specific focus on 'Media and free press'.  
Study skills  
Careers and finances

**Year 8** Will focus on 'Positive Self Esteem'. Including;

- Causes of low self esteem
- Media and self esteem
- Anxiety and self harm

Study skills

**Year 9** Will focus on 'Mental Health'. Including;

- Handling stress
- Drugs
- Alcohol

**Year 10** Will focus on 'Dealing With Stress'. Including;

- Time Management
- Relaxation Techniques

Radicalisation and Terrorism

**Year 11:** Will focus on 'Exams/'

- Radicalisation and Terrorism

